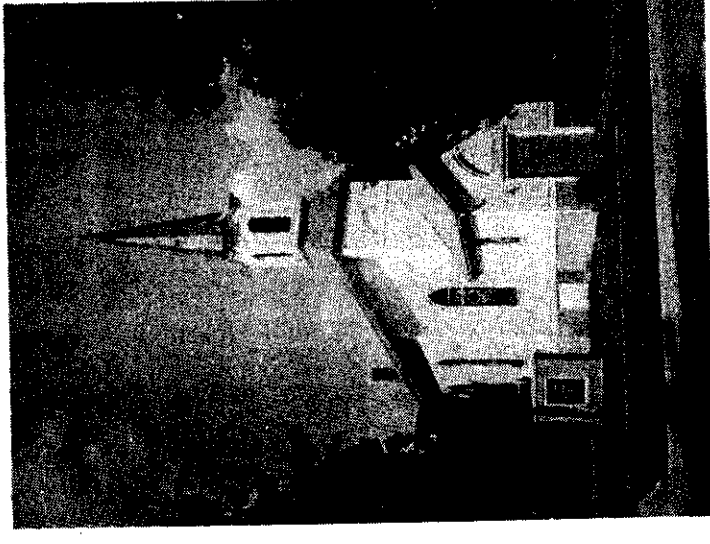


Keokuk County Historical Society

Incorporated 1962

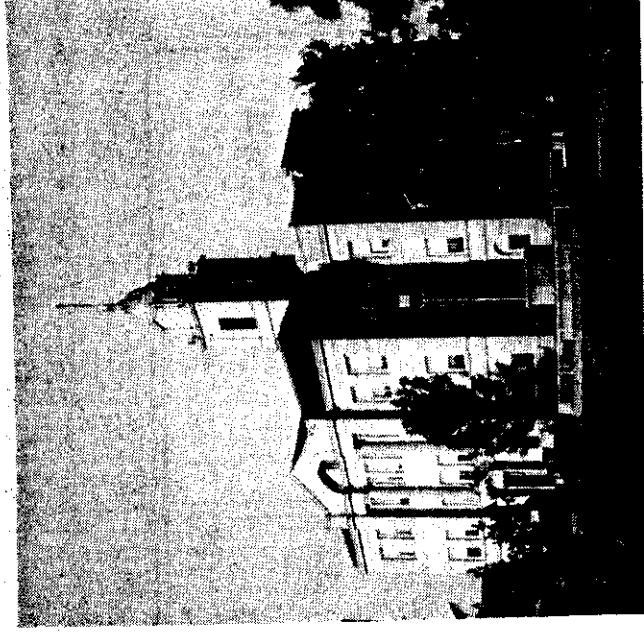


Located at Corner of
Elm and East Streets
Sigourney, Iowa

641-622-3005

Meetings Held 3rd Monday
Night Of Each Month

Building Open To Visitors
Each Wednesday 9 To 4
Each Thursday 9 To 4



KEOKUK COUNTY COURT HOUSE

Built of Bedford stone. Dedicated September, 1910. Murals in the dome were recently cleaned and restored, portraying pioneer life in four stages of development.

PROGRESS:

- Centennial Books - all 100 year towns on file
- Many historical books, pamphlets and clippings are on file
- Many old maps and photographs are being preserved
- Listing of known graves in 75 cemeteries are on file
- A fast growing obituary file, all records current 28,000 now on file
- All these are being added to constantly
- Marriage returns 1879 - 1920

FINANCIAL STATUS:

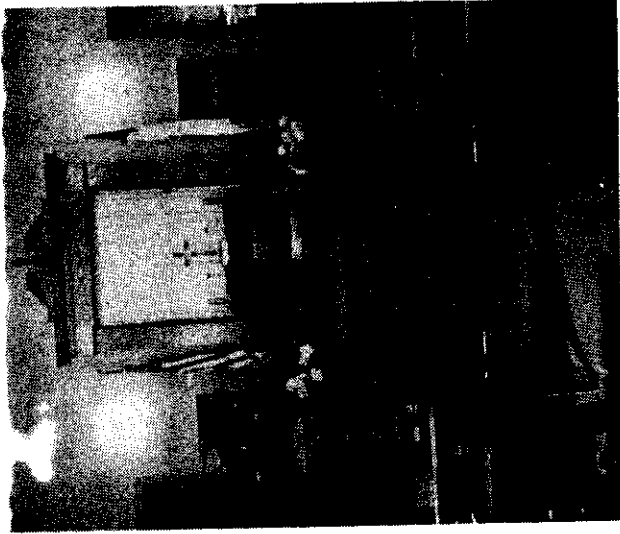
This organization is operated and maintained by membership dues, aid from donations from individuals and business firms, tax fund, memorial donations, and interest from endowments.

Some Facts About Keokuk County Historical Society

- Keokuk County was named after Chief Keokuk who signed the treaty to give the whites possession of the territory - 1842
- The southeast corner of the county was first opened to white settlement in 1838
- The balance of the area was opened in 1843
- Chief Wapello died in Rock Creek, Jackson township in March 1844
- Richland, the oldest town, was laid out in 1841
- Hedrick is the youngest town
- There have been altogether 60 towns or villages in the county. Sixteen now exist
- There are six county parks - Belva Deer, Griffen, Covered Bridge, Yen-Ruo-Gis, Manhatten and Bond Hill
- The first ice cream was sold in Keokuk County in 1858
- There are 75 cemeteries and burial plots in the county. The Shockley cemetery is one of the oldest of these. The first burial was that of Peter Besser
- The county was first organized in 1844, with Sigourney the county seat
- In 1846 the county seat was moved to Lancaster.
- After 10 years of litigation and controversy, the county seat was returned to Sigourney
- The first school in the county was taught in a log schoolhouse 3 1/2 miles northeast of Richland
- There are seventeen townships in the county
- The What Cheer Opera House and the Delta Covered Bridge are listed in the National Register of Historic Places
- The 4-H clubs of Iowa had their inception in Keokuk County under the leadership of Cap E. Miller
- The population of the county is approximately 14,000

PURPOSE:

- to create and keep alive local and state history
- to discover, collect and preserve books, genealogical information, portraits, relics, manuscripts and other articles of historic value
- to promote display of above articles
- to ascertain and mark historical sites
- to cooperate with Iowa State Historical Society and the Iowa State Department of History and other such agencies.



SANCTUARY:

The ownership of the former St. Paul's United Church of Christ, formerly German Evangelical built in 1887, was transferred to the Society on Dec. 27, 1972, with the understanding the sanctuary remain intact and said building be maintained as a permanent home for the County Historical Society, its files and museum.



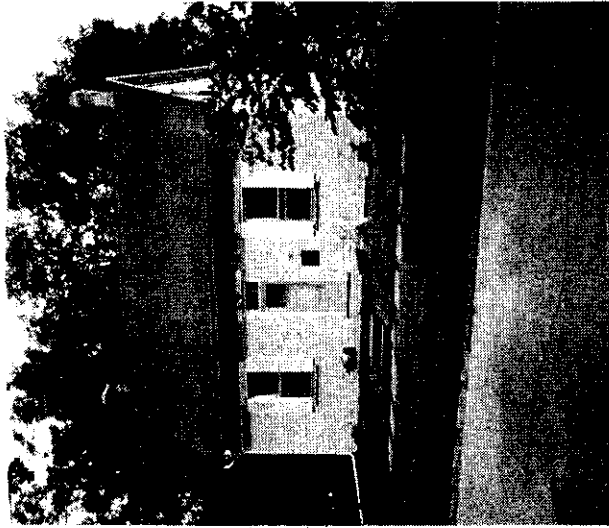
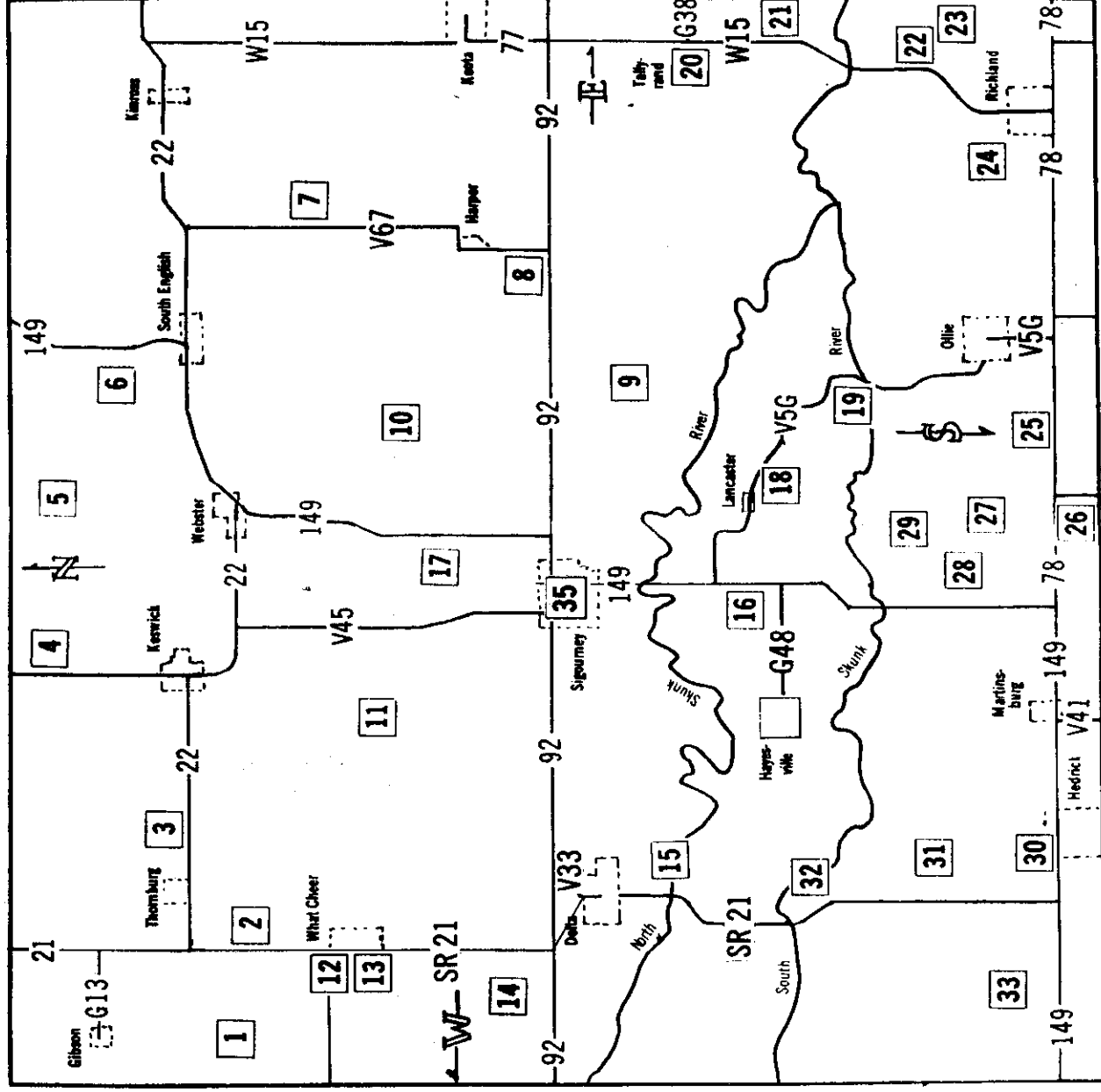
SEWING ROOM

Dressmaking artifacts

Points of Interest in Keokuk County

Key To Map

1. Coal Creek - old Quaker meeting house, 3 miles south of Gibson
2. Janetown - on Hwy. 21, 1 mi. north of fairground
3. Bruce Fish Hatchery, 1 mi. east of Thornburg
4. Old Aurora - 3 1/2 mi. No. of Keswick
5. Old White Pigeon - 4 mi. N. of Webster
6. Cuba (or Harris) 2 mi. N. 1 1/2 mi. west of S. English
7. Creswell P.O., 4 mi. No. of Harper on pavement
8. Baden (parish house still there on Hwy. 92)
9. Garibaldi - 3 mi. east of Co. Home and 2 mi. S. of 92
10. Belva Deer Park - N.E. corner Plank Twp.
11. Keenersburg - 1 mi. N. of partially razed church on V45
12. What Cheer Opera House - on What Cheer Main Street and Brick Museum
13. Griffen Park - S.E. corner of What Cheer
14. Old Springfield, 1 mi. west of Hwy. 21, 1 mi. N. of 92
15. Delta Covered Bridge - S.E. of Delta 1 1/2 mi.
16. Grave of Revolutionary War Veteran - Pennington Cemetery
17. Yen-Ruo-Gis Park - 3 mi. North of Sigourney
18. Lancaster - on V5G, S.E. of Sigourney, 2nd Co. Seat
19. Manhattan Park - on V5G, S. Skunk River
20. Talleyrand - Stagecoach Inn remains
21. Bond Hill Park - on Hwy. 77 N. of Richland
22. Site of Western City (or Newton) - 1 mi. west of Hopewell Church on W15
23. Site of Launa - 1 mi. east and 1/2 mi. south of Hopewell Church
24. Site of Mason - N.W. of Richland (no road to it)
25. Site of Ioka - Ioka Farm on town site
26. Site of South Ioka - now Pekin
27. Rock Creek Cemetery - 2 mi. W. of Ollie and 1/4 mi. south
28. Site of Nugent - 3 mi. E., 2 mi. N. of Martinsburg
29. Site of Walden P.O. - 1 1/2 mi. N.E. of Nugent
30. Restored Depot and Museum - on Hwy. 149 in Hedrick
31. Showman's Curve - 3 mi. N. of Hedrick on R.R. track
32. Slagle - 1/2 mi. E. of S. Skunk bridge on SR21 (no road)
33. Butler - 2 1/2 mi. W. of Hedrick, 1 mi. N.
34. Hayesville, two story frame school, restored
35. Sigourney - County Seat



THE STONE HOUSE

The oldest house in Sigourney given to the Keokuk County Historical Society in 1986 through the kindness of the Mohme family descendants. Built from 1855-1863. The stone was hauled overland from a Burlington quarry. Stone walls are 18 inches thick.

